

DIGGERS DIRT

The Dirt being dished the month...

General Meeting:

Judy McDonald's Home
1155 South Grand Ave.
Pasadena
Wednesday, June 6th
10:30am



Lunch Provided. Please RSVP
to Mary Blodgett
maryblodgett@gmail.com

Look ahead...

SUMMER!



Board Meetings

Mondays preceding the
General Meeting at 10:30am.
Please let Cathy know if you
would like to attend.



From the President

Emily Dickinson said "To live is so startling it leaves little time for anything else." Well - we Diggers have certainly lived this spring! (...and had little time for anything else...) Our plant sale and Auction came off without a hitch on a beautiful sunny April day, thanks to 'dynamic duo' Auction Chairs Sally M and Sally H. Everyone pitched in to set up, groom, label and price. Members created wonderful table centerpieces with materials cut from their own gardens and then decked themselves in gorgeous floral attire to welcome our guests to the event. We enjoyed delicious post-Auction cocktails and dinner in Debbe B's beautiful back yard, then caught our collective breath as a few of us prepared to travel on to Annual Meeting in SFO.

Mark Your Calendar**Upcoming GCA Dates**www.gcamerica.org**Shirley Meneice****Horticulture Conference**

September 13-15th, 2018

Longwood Gardens

Kennett Square,

Pennsylvania

There, our seven volunteers worked tirelessly to distribute Diggers donation bags (superbly designed by Sara) and assist at the "treats buffet". (See below.) A few of us bravely entered the flower show, while delegates Cathy and Liz experienced a wonderful array of meetings, speakers and tours. We all came away very proud of the GCA.

Our final meeting of the year will be held in Judy McDonald's beautiful garden, originally designed by Florence Yoch. Lunch will be provided so be sure to rsvp to Programs Chair, Mary B. I look forward to celebrating the year with you all, and as always -

✿ See you in the garden ✿

Cathy

Garden History and Design - Florence Yoch

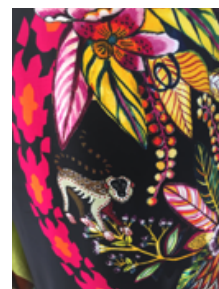
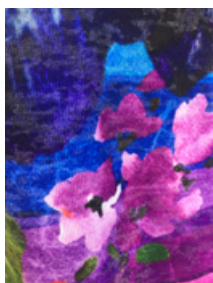
"Born into a privileged life in southern California, Florence Yoch studied at the University of California at Berkeley, at Cornell, and at the University of Illinois at Urbana-Champaign, where she completed a degree in landscape gardening. She began practicing in 1918 and over 53 years completed more than 250 projects. Her work encompassed a broad range of landscape types from grand estates to campuses, parks, even a botanical garden and five movie sets. Lucille Council became an apprentice to the firm in 1921 and as partners they lived and worked together until Council's death in 1964.



Prestigious commissions included the residence of Mrs. Howard Huntington in Pasadena, California, Shoshone Falls National Park, and the Wilshire Country Club in Los Angeles. The first female movie director, Dorothy Arzner, introduced Yoch to such distinguished Hollywood personages as Jack Warner and David Selznick, for whom Yoch designed the Tara set for *Gone with the Wind*. Yoch and Council traveled to North Africa to research the set for *The Garden of Allah*. With the advent of World War II, their work, greatly reduced, became more naturalistic, centered on the land, largely in the Pasadena region. Their designs were noted for the juxtaposition of informal, wild plantings and formal geometry, as well as the theatrical and unexpected." (The Cultural Landscape Foundation).

Diggers Auction 2018 - It was all about the flowers!

What we wore...



Tool Care with Louise Guerin

(Notes from our May Meeting)



Who knew cleaning tools could be so much FUN?!!

Always have on hand:

Old cloth or newspaper to cover work surface and catch dust and grit

Spray water bottle

Rubbing alcohol (70% strength, not more)

Sharpening tools

Sandflex Rust Eraser Fine (cleaning bar)

Non-food grade penetrating oil (chain oil is better than WD40).

Nitrile gloves

Pumice (medium or super fine; coarser will grind down the tool)



Tracy's Home

Instructions:

Sharpen the angled side of blade using one direction.

Remove brads (black dust residue) by running finger carefully along back side of blade.

Disinfect blade with 70% rubbing alcohol.

Add just a drop of oil to prevent rust.

After tool is sharpened, clean with pumice stone.

Sharpen tools 1 x week.

-Test the sharpness of the blade by cutting folded newspaper.

-If not using gloves, use Goo-Gone to clean gritty hands.

-Preferred brand for garden tools is Felco. Blades, springs, wings, nuts and arm are available as replacement parts. Corona is a suitable brand for small tools.

Diggers Volunteers at the GCA Annual Meeting



Ready to go...



...in SFO

Athena, Yvonne, Clare, Mary, Carlin, Sally M & Sara.

Thank you for the many volunteer hours you gave to help make the 2018 Annual Meeting a big success!



Our club gift bag donation, beautifully designed by Sara Pelton, was given to each registered Annual Meeting attendee.

Attending delegates were then invited to choose treats from a "buffet" of items generously donated by Zone XII clubs.

Many thanks go to Carlin McCarthy for soliciting items and organizing the "buffet" concept, which encouraged people to take only what they could use, thereby eliminating waste.

Conservation

The Annual Meeting Conservation exhibit was exceptional in every way. Chaired by KC Vincelette of the Hillsborough Garden Club, each state in Zone XII participated and the exhibit won four conservations awards! Not only was it a delight to view, it was educational and interactive as well. Delegates were given a "Source to Sea" lapel pin that came with a barcode. By simply holding the barcode up to the lens of an iPhone camera, a link popped up with specific information about watersheds in the west. This digital part of the exhibit is now available on the public pages of the GCA website.

Please be sure to visit the following link to view the online brochure and to learn more about our wonderful Zone XII watersheds:



National watershed map

<https://www.gcamerica.org/uploads/filemanager/common/public/file/events/2018ZoneXII.pdf>



"Source to Sea" lapel pin

Annual Meeting Delegates were also encouraged to place pins in a national watershed map to mark their local watersheds.

In addition, the importance of trees in all watersheds was illustrated by a beautiful Redwood tree exhibit, complete with botanically labeled companion and understory plants, redwood saplings and even large Redwood tree trunks that wrapped supporting columns in the exhibit space.

Overall, "A Watershed Moment" was creative, educational and fun!

Horticulture

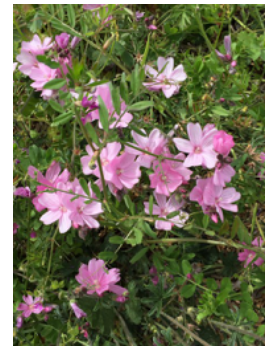
Bees, butterflies, and other pollinators need access to abundant nectar and pollen resources throughout the growing season. By including native plants in your garden, you provide the most nutritious source of this food for the animals of your specific area. At minimum, strive for three species to be blooming at any one time; the greater the diversity, the better. The following Xerces Society website has some very helpful plant lists to help you find the best plants for your garden:

http://www.xerces.org/wp-content/uploads/2014/09/CaliforniaPlantList_web.pdf

Delegates Cathy and Liz appreciated the many native flowering plants they saw on a tour of the Presidio at the Annual Meeting in SFO.



Franciscan Paintbrush
Castilleja subinclusa



Checkerbloom
Sidalcea malviflora



Seaside Daisy
Erigeron glaucus



Douglas Iris
Iris douglasiana



Coast Angelica
Angelica hendersonii