

DIGGERS DIRT

The Dirt being dished this month...



General Meetings:

General meeting begins at 10:30am (Unless otherwise noted). 12:00 noon Meeting. Bring sack lunch. Invite guests when appropriate.

Look ahead...

- Jan 31 - Centennial Meeting @ Cindy Wenzlau's @ 9:45 am**
- Feb 7 - Conservation Workshop @ Sally Miller's Linda Vista Studio**
- Feb 21 - Storrier Stearns Japanese Garden Field Trip**
- Mar 6 - California Botanic Garden Tour In Claremont**
- Apr 3 - Old Mill Clean Up**
- Apr 21- Plant Drop off @ Old Mill**
- Apr 22 -Auction Set-Up**
- Apr 23 -Auction Set-Up**
- Apr 24 -AUCTION @ Old Mill**
- May 1 - No Diggers Meeting (PGC Doorways & Dining)**
- May 8 - Founder's Day Event**
- Jun 5 - Diggers Annual Mtg @ Connie Harding's**

From the President

Dear Diggers,

I know I am not alone in saying the tour of Huntington's Desert Garden last week was thoroughly enjoyable! Ivan was incredibly knowledgeable and his passion for the desert landscape was contagious. He described the desert garden as art, and I would agree that each "framed" view of the garden was like a beautiful painting. We learned some of the



good, the bad, and the ugly this garden landscape has to offer. For example, good is the beautiful succulents that arise when a mutation causes a cristata or crested growth on a plant. Bad is the danger of walking too closely to a

Board Meeting

10:30 a.m. Monday's preceding the General Meetings at Athena's home. Please let Athena know if you would like to attend.

Old Mill Workday

Bring your gloves, shovel and clippers...Tues 1/23 from 9:00-10:30 am

Mark Your Calendar

Upcoming GCA Dates

www.gcamerica.org

Jan 25, 2024

Photog Conf -Virtual

Feb 6, 2024

Floral Design Conference - Virtual

Mar 17-20, 2024

NAL - Washington

Apr 16-17, 2024

Zone XII Meeting - Hancock Park

Apr 27-28, 2024

GCA Annual Mtg - Connecticut

variety of cactus that launch barbed spikes at the unsuspecting. And ugly is the rise in theft of certain rare



specimens from the Huntington's desert garden collection. Nicole Cavender's presence was a bonus, especially for those Diggers at the back of the group. Yvonne, thank you for planning a delightful morning.

Looking ahead, Carlin is preparing for her conservation program, "wild bee hotel"

workshop, which will take place at Sally Miller's Linda Vista home. Mason and leafcutter bees will hopefully nest in the hotels and, in return, pollinate our gardens. One little bee hotel can house enough bees to pollinate a half-acre! Look out for a meeting announcement with important information regarding the workshop.

If you have a chance, please read the recent issue of GCA's Bulletin. This horticulture issue is filled with interesting information such as online help for houseplants, fungi fun, and an announcement of the three 2024 Founders Fund finalists which we will vote on at our March meeting.

With the new year, we have officially entered our centennial. I am looking forward to celebrating Diggers' past, present, and future with each one of you throughout this year!

Cheers to 100 years!

Athena

The Old Mill

Old Mill art related Events

ATTENTION ART ENTHUSIASTS!

Here is our 2024 calendar of "art-related" events at the Mill. We have listed our exhibition schedule below. Following the Opening Night Reception for each new exhibit, that Sunday we will be hosting a "paint out" with California Art Club artists as well as a children's art workshop, so bring your kids and your grandkids for a fun day at the Mill!

New Exhibit, *Moonlight Serenade* -- January 25, 2024 to May 19, 2024

Opening Night Reception: January 25, 5:30pm-7:30pm

CAC Paint Out and Children's Art Workshop: January 28, 10am-2pm

Plein Air Day: Saturday, February 24, 10am-2pm

Artists will be painting throughout the garden. There will be tables set up with art supplies and paintings for sale on our driveway, and easels will be set up for kids and adults to draw and paint. Several artists from the current exhibit will be on-site to talk about their paintings.



The original millstones were discovered on the grounds of the Huntington Library by Gen. George S. Patton.

Garden Club Of America

The link is now up to sign up for the Virtual Photography Conference. Click on the link below to sign up.



<https://www.gcamerica.org/members:calendar/ereventdetails/id/480>

Also, the link is up now to sign up for the GCA Virtual Floral Design Conference on February 6th. Click on the link below to sign up.



<https://www.gcamerica.org/members:calendar/ereventdetails/id/486>

We will be voting on the Founder's Fund Finalists in March. Please go to the link below to refresh yourself with the different finalists.

<https://www.gcamerica.org/uploads/filemanager/contentpageresource/2024%20FF%20Winter%20Bulletin%20FT.pdf>

Our friend, Ari Novy, is on the list of the 2024 GCA Honorary Members. Proposed by Diggers GC (Mary Blodgett) and seconded by Orinda GC! Well done, Mary!

<https://www.gcamerica.org/members:news/get?id=4515>

January Meeting

Digger's enjoyed touring the Huntington's Desert Garden



Founder's Corner - Gwen



Florence Van Vechten Murphy Dickey (1888 – 1974)

One of the Seven Founding Members

Florence was born in Michigan, the daughter of Simon J. Murphy, Jr. who was born in Maine, graduated from Harvard, and was involved in the lumber business in several states.

Florence was a college graduate, per the 1940 census, and married to Donald Dickey (Yale 1910), a professor of ornithology. He was associated with the Southwest Museum when they were married in 1920, and was with Caltech when she joined the Diggers in 1924. In the 1930 census they were living in Ojai and he was working for the Santa Barbara National Forest. We can assume that the family spent their summers in Ojai, and the rest of the year in Pasadena. Professor Dickey died in 1932, of a heart attack, after two years of illness, leaving her with her son, Donald Dickey Jr., who was 7.

The Professor was famous for his extensive collection of vertebrate models.

When Florence died in 1974, it was at her home in Alleghany, Sierra County, California, where she owned a gold mine. She also had an apartment in San Francisco. She was known for restoring the Lyford mansion on the edge of the bay in Tiburon, which changed its name to the Dickey House in her honor. She is buried at the Cypress Lawn Cemetery in Colma.



514 Lester, changed to 514 Rosemont, the home of Florence Van Vechten Dickey. The street name was changed to Rosemont, at the time of the construction of the Rose Bowl.

Conservation - Carlin McCarthy

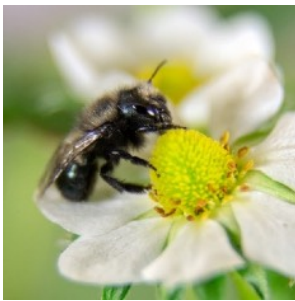
FEBRUARY 7TH DIGGERS MEETING~ Native Bee Hotels

We will assemble simple Native Bee Hotels, similar to this one. In the link below, watch a female blue orchard bee fashion exquisite nests out of mud and pollen that resemble pieces of jewelry. In the process, she helps us grow nuts and fruits.

<https://www.pbs.org/video/watch-this-bee-build-her-bee-jeweled-nest-epwlkz/>

Gentle solitary bees rarely sting, making them kid and pet safe!

Ten plants native bees like: <https://ucdavis.app.box.com/s/15mw4rbmmdkwv91trkxqy55mzj6ag7zr>



Spring Mason Bees are perfect for fruit and nut trees, berries, and spring-blooming flowers. These super pollinators visit thousands of flowers per day with a pollination rate of 99%! Mason bees are active in your garden for 4-6 weeks — to learn more about the mason bee life cycle go to: <https://crownbees.com/pages/mason-bee-life-cycle>

Leafcutter bees can double or triple your fruit and vegetable yields! They are 100 times more effective at pollination than honeybees. Like mason bees, they are only active in your garden for 4-6 weeks. Perfect for melons, cucumbers, beans, sunflowers, strawberries, and virtually all summer-blooming flowers. Leafcutter bees use non-fibrous leaves like roses, lilac, or Hosta to protect their eggs. Plant peas, beans, or strawberries for flower and leaf sources. Leafcutter bees fly best when daytime temps are 75°F/24°C and above.



I first learned about Bee Hotels during Covid lockdown by watching this charming film, *My Garden of a Thousand Bees*:

“Taking refuge from the coronavirus pandemic, wildlife filmmaker Martin Dohrn set out to record all the bees he could find in his tiny urban garden in Bristol, England, filming them with one-of-a-kind lenses he forged on his kitchen table.”

<https://www.pbs.org/wnet/nature/my-garden-thousandbeesabout/26263/>

More Conservation - Carlin

NEXTREX RECYCLING CHALLENGE

Our first collection yielded 6.5 pounds of plastic which we took to the bin at Vons. Thank you, Athena, for putting the collection box at your front door. We will collect again at our February 7th meeting. If you can't wait for our meetings, there should be recycling collection bins at Albertson's, Food4Less, Kohls, Ralphs, Sprouts Farmers Market, Vons, Winco and Savemart.



These are bins at Vons. Remember, if you ask at the store, they probably don't know where the plastic is going.

Click on the link to see what you CAN recycle: https://nextrex.com/jsfapp/cdocs/w493_q2_sp21_0_trex-recycling-posterpdf.pdf

This link to see what you CANNOT Recycle under the Trex program: https://nextrex.com/jsfapp/cdocs/20220811141301_9_jsfwd_493_q2_1.pdf

Endowment - Debbe Booth

Endowment Fund donation request letters were mailed out last year. Please consider donating! If you have any ideas for Endowment Fund projects, please contact Debbe. We have money to spend!



Membership - Liz

We have three potential new members into our garden club. Letters were written and read with loving hearts. Please remember to reach out to Liz if you wish to meet these potential members and get to know them better. If you know them and love them, please reach out to Liz to give your approval. She needs to hear from everyone of us!!!

Scholarship - Liz Gilfillan

EVENT DETAILS

08 Virtual Roundtables - "Library Book Club Collab with Scholarship"
FEBRUARY

ASSOCIATED COMMITTEE OR ZONE:	Library, Scholarship
WHEN:	Thu, Feb 8, 2024 at 04:00 PM - 05:00 PM
WHERE:	Virtual
SPEAKER:	Rosetta Elkin, 2017 Recipient of The GCA Rome Prize Fellowship in Landscape Architecture


DESCRIPTION:

SIGN UP NOW!

All who sign up for the event will receive an email the day before the event with the Zoom link to join. All times are Eastern Time.

Our special guest speaker, Rosetta Elkin, is the 2017 recipient of The Garden Club of America Rome Prize Fellowship in Landscape Architecture and the author of *Plant Life: The Entangled Politics of Afforestation*. Rosetta is a founding Principal of Practice Landscape, a collaborative studio that prioritizes landscape-making, gardens, public exhibitions, and horticultural design to promote a more thoughtful and accurate design agenda. She is an Associate Professor of Landscape Architecture at Pratt Institute.

A book review will be posted soon.



Sign up for the virtual book talk with the 2017 Recipient of the GCA Rome Prize Fellowship.

Field Trip - Storrier Stearns Japanese Garden

Storrier-Stearns Japanese Garden - 270 Arlington Drive

Wednesday, February 21

Tour - 10:30 a.m. (approximately 1 hour)

Cost - \$15.00 (bring cash or check made out to Ruth or Venmo Ruth)

Please carpool

RSVP to Ruth by Feb. 12



The Japanese Garden is delighted we would like to visit and learn more about this special oasis in the heart of Pasadena. We will be in the garden when it is closed to the public so you may enjoy it the way Ellamae and Charles Storrier Stearns did after its creation on their private estate during the late 1930s.

A staff member or volunteer will introduce you to the interesting history behind the garden and point out some of the design elements typical of a Japanese "hill and pond stroll garden". The exquisite Niko-an Teahouse will be open for you to enter and experience its unique atmosphere of tranquility.